

# STOP the spread of COVID-19 on your floors.

Sponge-style Splashless Sanitizing Mat System

## Splashless Sanitizing Mat to Stop COVID-19

Sanitizing Mat is a sponge-style sanitizing entrance matting system designed to sanitize footwear to help reduce the spread of harmful germs, bacteria, and viruses in public spaces. Sanitizing Mat delivers sanitizing solution directly to shoe soles as people enter your building, and then dries shoe bottoms to prevent slip and fall accidents.

System comes with an option to purchase a complete Wet Side and Dry Side mats OR Just a Wet mat alone!



Our Sanitizing Mat holds **2 litres** of sanitizing solution completely within the fibres to **prevent messy splashing and sloshing** when in use. Unlike open tray style sanitizing mats,

*Grizzly Sanitize is splashless, easy to use, and designed for street shoes!*



### 1. Wet Side

Inbound foot traffic steps onto Grizzly Sanitize Wet Side.



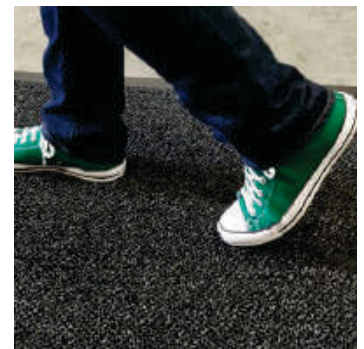
### 2. Wait

Stand until shoe soles are fully coated with sanitizer.



### 3. Dry Side

Step to dry off the floor contact patches of shoe treads.



### 4. Go!

Dry shoe sole bottoms prevent slip and fall accidents.

## Sanitizing Mat advantages:

splashless design – no puddles, no mess!

Efficient sanitizer consumption (only 2 L per fill)

included Dry Side mat prevents puddles and mess on your entrance floor

sponge-style design reduces evaporative losses

no-touch empty/refill method

no disposable components to replace

wheelchair and walker-friendly ramped vinyl edges designed for use with street shoes

made in Zambia

comes as a complete system: matched set of mats for a professional look

can run on most quaternary sanitizers

dual purpose remains useful after pandemic ends



SCAN ME

For Orders & Inquiries  
**0211 355995 | 0764 036 711**  
**www.aromerc.com**



# STOP the spread of COVID-19 on your floors.

Sponge-style Splashless Sanitizing Mat System

## 9 reasons why Our Sanitising mats are better

<b>1 Splashless</b> Grizzly Sanitize is a sponge-style sanitizing mat that uses premium nylon to hold sanitizing solution within the fibres themselves to stay neat, tidy, and splash-free. Say no to open trays of chemical solution that splatter and splash!	<b>2 Efficient</b> Open-tray sanitizing mats need gallons to fill up...sanitizer that's expensive and hard to get! Doorway-3 only uses two litres of sanitizer - up to 90% less sanitizer solution than the competition.	<b>3 Barrier-Free</b> Wheels are no problem! Sturdy ramped Cart Edge on all sides eliminate a barrier to people with wheelchairs or mobility issues. Shopping carts and other wheeled traffic are no problem!
<b>4 Street-Shoe Friendly</b> Being only 1/4" thick makes Grizzly Sanitize compatible for use with street shoes. Open-tray sanitizing mats are several inches deep, submerging your feet up to the ankles...not so great when you're wearing heels, loafers, sandals, or sneakers.	<b>5 Works on Inclines</b> Unlike open-tray sanitizing mats, Grizzly Sanitize works even on gentle slopes and inclined surfaces! Because Grizzly Sanitize holds its sanitizing solution within the nylon fibres like a sponge, the floor you use it on doesn't need to be perfectly flat. Try that with an open-tray mat!	<b>6 Customizable</b> Grizzly Sanitize comes in standard single and double door configurations, but it is completely customizable for size and shape. Other sanitizing mats are moulded rubber or plastic – individual custom sizes are impossible.
<b>7 Comes Complete</b> Grizzly Sanitize comes as a complete sanitizing mat system – both the Wet Side and the Dry Side mats are included. The other guys only include the wet sanitizer mat, leaving you on your own to find a suitable dryer mat...or no dryer mat at all, creating a slippery, wet mess on your entrance floor.	<b>8 Post-Pandemic</b> After the pandemic ends, Grizzly Sanitize converts into a high-performance, super absorbent, long-lasting Grizzly FX entrance mat that can be used for years and years at your busiest commercial doorways.	<b>9 Made in Zambia</b> Grizzly Sanitize is built right here in Zambia. Lets Support local.



For Orders & Inquiries  
**0211 355995 | 0764 036 711**  
**www.aromerc.com**

